

00

color  
combination  
number



# Pop-up kitchen Pia

*model: NOVA*



**zone 1**

*outer sides and doors*

**zone 2**

*lower cabinets doors  
and upper cabinets*

**zone 3**

*central door area  
and kitchen back*

**zone 4**

*worktop*

01



A  
*(lava wood)*

J  
*(lava)*



F  
*(winter white)*

Q  
*(winter white)*

02



A

*(lava wood)*

H

*(winter beige)*



I

*(light grey)*

O

*(sand)*

03



A  
*(lava wood)*

I  
*(light grey)*



K  
*(black)*

S  
*(mocca)*

04



**B**  
*(sand oak)*

**J**  
*(lava)*



**F**  
*(winter white)*

**Q**  
*(winter white)*

05



**B**  
*(sand oak)*

**F**  
*(winter white)*



**F**  
*(winter white)*

**Q**  
*(winter white)*

06



**C**  
*(red wood)*

**M**  
*(yellow)*



**K**  
*(black)*

**P**  
*(black)*

07



**C**  
*(red wood)*

**F**  
*(winter white)*



**K**  
*(black)*

**P**  
*(black)*



08



C  
*(red wood)*

K  
*(black)*



F  
*(winter white)*

Q  
*(winter white)*

09



**D**  
*(dark oak)*

**F**  
*(winter white)*



**F**  
*(winter white)*

**Q**  
*(winter white)*

10



**D**  
*(dark oak)*

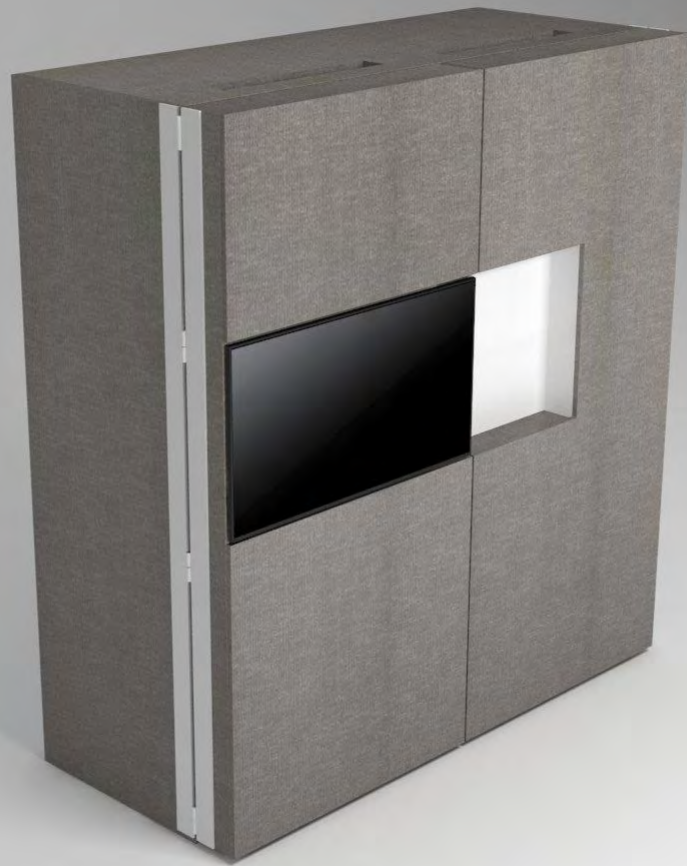
**J**  
*(lava)*

**J**  
*(lava)*

**S**  
*(mocca)*



11



**E**  
*(textile grey)*

**E**  
*(textile grey)*



**F**  
*(winter white)*

**Q**  
*(winter white)*

12



**E**  
*(textile grey)*

**I**  
*(light grey)*



**K**  
*(black)*

**P**  
*(black)*

13



**F**  
*(winter white)*

**G**  
*(winter grey)*

**G**  
*(winter grey)*



**Q**  
*(winter white)*

14



**F**  
*(winter white)*

**F**  
*(winter white)*



**L**  
*(fuchsia)*

**Q**  
*(winter white)*

15



**F**  
*(winter white)*

**F**  
*(winter white)*



**M**  
*(yellow)*

**P**  
*(black)*



16



**F**  
*(winter white)*

**I**  
*(light grey)*



**N**  
*(green)*

**Q**  
*(winter white)*

17



**F**  
*(winter white)*

**H**  
*(winter beige)*



**L**  
*(fuchsia)*

**Q**  
*(winter white)*

18



**F**  
*(winter white)*

**J**  
*(lava)*



**I**  
*(light grey)*

**S**  
*(mocca)*

19



**F**  
*(winter white)*

**I**  
*(light grey)*



**E**  
*(textile grey)*

**Q**  
*(winter white)*

20



**G**

*(winter grey)*

**F**

*(winter white)*



**M**

*(yellow)*

**Q**

*(winter white)*

21



G

*(winter grey)*

F

*(winter white)*



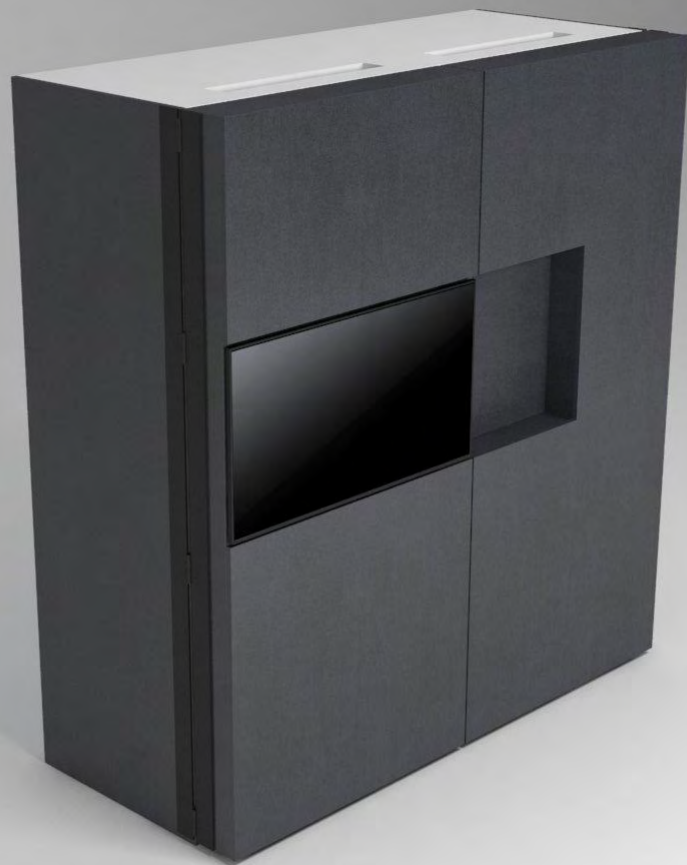
F

*(winter white)*

Q

*(winter white)*

22



G

*(winter grey)*

F

*(winter white)*



G

*(winter grey)*

P

*(black)*

23



G

*(winter grey)*

H

*(winter beige)*



K

*(black)*

P

*(black)*



24



**H**  
*(winter beige)*

**I**  
*(light grey)*



**F**  
*(winter white)*

**O**  
*(sand)*

25



**H**  
*(winter beige)*

**F**  
*(winter white)*



**K**  
*(black)*

**O**  
*(sand)*

26



**I**  
*(light grey)*

**H**  
*(winter beige)*



**J**  
*(lava)*

**O**  
*(sand)*

27



**I**  
*(light grey)*

**E**  
*(textile grey)*



**F**  
*(winter white)*

**Q**  
*(winter white)*

28



**I**  
*(light grey)*

**B**  
*(sand oak)*



**F**  
*(winter white)*

**Q**  
*(winter white)*

29



**J**  
*(lava)*

**F**  
*(winter white)*



**F**  
*(winter white)*

**Q**  
*(winter white)*

30



**J**  
*(lava)*

**F**  
*(winter white)*



**I**  
*(light grey)*

**S**  
*(mocca)*

31



**K**  
*(black)*

**J**  
*(lava)*



**F**  
*(winter white)*

**Q**  
*(winter white)*



32



**K**  
*(black)*

**F**  
*(winter white)*



**M**  
*(yellow)*

**P**  
*(black)*

33



**L**  
*(fuchsia)*

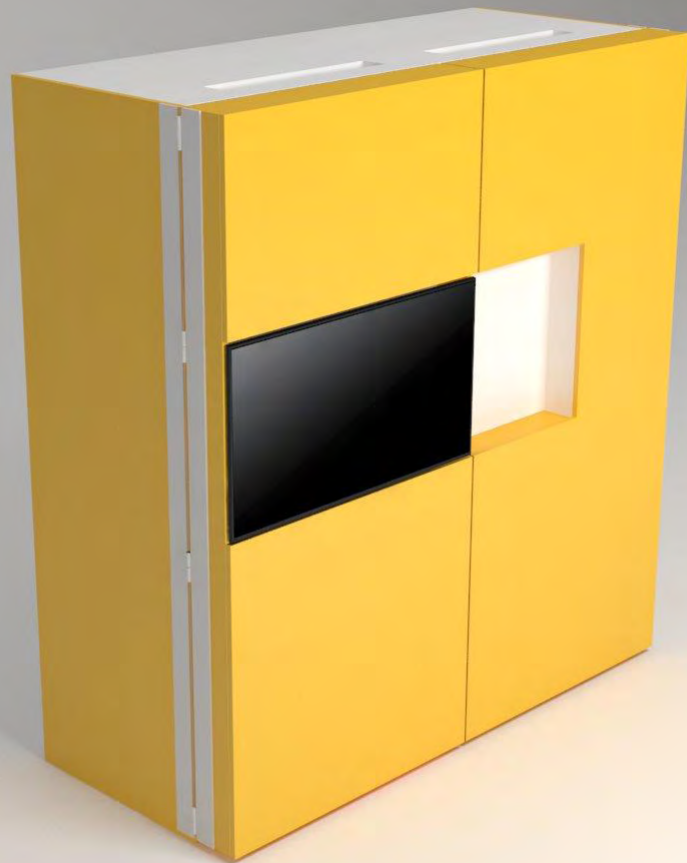
**F**  
*(winter white)*



**F**  
*(winter white)*

**Q**  
*(winter white)*

34



**M**  
*(yellow)*

**F**  
*(winter white)*



**F**  
*(winter white)*

**Q**  
*(winter white)*

35



**N**  
*(green)*

**F**  
*(winter white)*



**F**  
*(winter white)*

**Q**  
*(winter white)*

36



**N**  
*(green)*

**E**  
*(textile grey)*



**F**  
*(winter white)*

**Q**  
*(winter white)*